

BEFORE THE ILLINOIS POLLUTION CONTROL BOARD

**Fehr Brothers
(Property Identification Number
06-34-300-001)**

)
)
)
)

**PCB No. 25 -
(Tax Certification)**

NOTICE

PLEASE TAKE NOTICE that I have today filed with the Office of the Clerk of the Pollution Control Board an **APPEARANCE** and **RECOMMENDATION OF THE ILLINOIS ENVIRONMENTAL PROTECTION AGENCY**, copies of which are herewith served upon you.


Fehr Brothers
Toby Fehr
2842 County Road 1600 N.
El Paso, Illinois 61738

Don Brown, Clerk
Illinois Pollution Control Board
60 E. Van Buren St., Ste. 630
Chicago, Illinois 60605

Copies also provided electronically as follows:

Illinois Department of Revenue
via email at REV.PropTaxApp@illinois.gov
101 West Jefferson
P.O. Box 19033
Springfield, Illinois 62794

ILLINOIS ENVIRONMENTAL PROTECTION AGENCY

By: 
Amanda Kimmel
Assistant Counsel
Division of Legal Counsel

DATED: July 10, 2025

Illinois Environmental Protection Agency
2520 W Iles Ave.
P.O. Box 19276
Springfield, Illinois 62794-9276
(217) 782-5544

THIS FILING IS SUBMITTED ON RECYCLED PAPER

BEFORE THE ILLINOIS POLLUTION CONTROL BOARD

Fehr Brothers
(Property Identification Number
06-34-300-001)

)
)
)
)

PCB No. 25-
(Tax Certification)

A P P E A R A N C E

The undersigned, as one of its attorneys, hereby enters an **APPEARANCE** on behalf of Respondent,
Illinois Environmental Protection Agency.

ILLINOIS ENVIRONMENTAL PROTECTION AGENCY

By: _____



Amanda Kimmel
Assistant Counsel
Division of Legal Counsel

DATED: July 10, 2025

Illinois Environmental Protection Agency
2520 W Iles Ave.
P.O. Box 19276
Springfield, Illinois 62794-9276
(217)782-5544

THIS FILING IS SUBMITTED ON RECYCLED PAPER

BEFORE THE ILLINOIS POLLUTION CONTROL BOARD

Fehr Brothers)	
(Property Identification Number)	PCB No. 25-
06-34-300-001))	(Tax Certification)
)	

**RECOMMENDATION OF THE ILLINOIS
ENVIRONMENTAL PROTECTION AGENCY**

The Illinois Environmental Protection Agency ("Illinois EPA") hereby files its Recommendation pursuant to Section 125.204 of the regulations of the Illinois Pollution Control Board ("Board"), 35 Ill. Adm. Code 125.204.

1. On February 23, 2024, the Illinois EPA received a request from Fehr Brothers (Log number TC-151202, Exhibit A) for an Illinois EPA recommendation regarding the tax certification of water pollution control facilities pursuant to 35 Ill. Adm. Code 125.204.
2. The facility's address is: Fehr Brothers
1768 County Road 2900 E.
Minonk, Illinois 61760

The proposed water pollution control facilities in this request are located in the NW ¼ of Section 34, T28N, R2E of the 3rd P.M. in Woodford County, at the above street address and consist of the following livestock waste management structures:

One (1) concrete manure pit measuring 257 ft. (length) x 121.83 ft. (width) x 10 ft. (depth), concrete slatted flooring over the manure pit, twelve (12) pumpout pits measuring 6 ft. (length) x 6 ft. (width) x 10.83 ft. (depth), all the concrete columns and concrete beams. A perimeter drain measuring 920 linear feet (length) x 6 in. (height) called Form-a-Drain was installed to prevent flotation surrounds the pit.

These livestock waste management facilities are used to collect, transport and/or store livestock waste prior to cropland application.

3. Section 11-10 of the Property Tax Code, 35 ILCS 200/11-10 (2022), and Section 125.200(a) of the Board's regulations, 35 Ill. Adm. Code 125.200(a), define "pollution control facilities" as:


THIS FILING SUBMITTED ON RECYCLED PAPER

any system, method, construction, device or appliance appurtenant thereto or any portion of any building or equipment, that is designed, constructed, installed or operated for the primary purpose of: eliminating, preventing, or reducing air or water pollution ...or treating, pretreating, modifying or disposing of any potential solid, liquid or gaseous pollutant which if released without treatment, pretreatment modification or disposal might be harmful, detrimental or offensive to human, plant or animal life, or to property.

4. In order to receive preferential tax treatment as pursuant to 35 ILCS 200/11-5 (2022), pollution control facilities must be certified as such by the Board, 35 ILCS 200/11-20 (2022) and 35 Ill. Adm. Code 125.200(a).
5. Upon receipt of a tax certification application, the Illinois EPA must file a recommendation on the application with the Board, 35 Ill Adm. Code 125.204(a).
6. Based on the information in the application and the purpose of the facility, it is the Illinois EPA's engineering judgment that the described facilities may be considered "pollution control facilities," pursuant to 35 Ill. Adm. Code 125.200(a), with the primary purpose of eliminating, preventing, or reducing water pollution, or as otherwise provided in 35 Ill. Adm. Code 125.200, and are eligible for tax certification from the Board.

WHEREFORE, the Illinois EPA recommends that the Board issue the requested tax certification.

ILLINOIS ENVIRONMENTAL PROTECTION AGENCY

By: 
Amanda Kimmel
Assistant Counsel
Division of Legal Counsel

Dated: July 10, 2025

Illinois Environmental Protection Agency
2520 W Iles Ave.
P.O. Box 19276
Springfield, Illinois 62794-9276
217/782-5544

THIS FILING SUBMITTED ON RECYCLED PAPER



ILLINOIS ENVIRONMENTAL PROTECTION AGENCY

2520 WEST ILES AVENUE, P.O. BOX 19276, SPRINGFIELD, ILLINOIS 62794-9276 • (217) 782-3397

JB PRITZKER, GOVERNOR

JAMES JENNINGS, ACTING DIRECTOR

Memorandum

To: Mike Roubitchek, Division of Legal Counsel

From: Darin LeCrone, P.E., Manager, Permit Section, Division of Water Pollution Control, Illinois Environmental Protection Agency *DL*

Date: MAY 14 2025

Re: Fehr Brothers - Minonk
Recommendation of Tax Certification
Log No.: TC-151202
BOW ID No.: W2030400008
Property Index Number: 06-34-300-001

The Bureau of Water received a request on February 23, 2024, from Toby Fehr, having a principal place of business at 2842 County Rd 1600 N., El Paso, IL 61738, for an Illinois EPA recommendation regarding the tax certification of water pollution control facilities pursuant to 35 Ill. Adm. Code 125.204. We offer the following recommendation.

The water pollution control facilities in this request include the following:

Fehr Brothers-Minonk
1768 County Rd 2900 E.
Minonk, IL 61760

NW ¼ of Section 34, T28N, R2E, of the 3rd Prime Meridian in Woodford County.

Livestock waste handling facilities consist of:

One (1) concrete manure pit measuring 257 ft. (length) x 121.83 ft. (width) x 10 ft. (depth), concrete slatted flooring over the manure pit, twelve (12) pumpout pits measuring 6 ft. (length) x 6 ft. (width) x 10.83 ft. (depth), all the concrete columns, and concrete beams. A perimeter drain measuring 920 linear feet (length) x 6 in. (height) called Form-a-Drain was installed to prevent flotation surrounds the pit.

These livestock waste management facilities collect, transport, and/ or store livestock waste prior to cropland application.

The facilities are further described in the enclosed applications and supporting documents.

Based on the information included in this submittal, it is our engineering judgment that the above proposed facilities may be considered "Pollution Control Facilities" under 35 Ill. Adm. Code 125.200(a), with the primary purpose of eliminating, preventing, or reducing water pollution, or as otherwise provided in this section, and therefore eligible for tax certification from the Illinois Pollution Control Board. The Bureau of Water therefore recommends that the Board issue the requested tax certification for these facilities.

2125 S. First Street, Champaign, IL 61820 (217) 278-5800
115 S. LaSalle Street, Suite 2203, Chicago, IL 60603
1101 Eastport Plaza Dr., Suite 100, Collinsville, IL 62234 (618) 346-5120
9511 Harrison Street, Des Plaines, IL 60016 (847) 294-4000

595 S. State Street, Elgin, IL 60123 (847) 608-3131
2309 W. Main Street, Suite 116, Marion, IL 62959 (618) 993-7200
412 SW Washington Street, Suite D, Peoria, IL 61602 (309) 671-3022
4302 N. Main Street, Rockford, IL 61103 (815) 987-7760

Page No. 2

Tax Certification Recommendation

Log No. TC-151202

If you have any questions regarding this letter, please contact Sarah Coulton at 217/782-0610.

SC:TC-151202_Tax Cert Recommendation_19Mar25.docx

cc: Tax Cert File

Illinois EPA - Bureau of Water - Division of Pollution Control

Title 35 Subtitle A Part 125 Tax Certifications

Illinois EPA Review Notes for:

Agency Recommendation of Pollution Control Facilities.

BOW ID #: W2030400008

Project Name: Fehr Brothers-Minonk

Pollution Control Facility Type:

Swine Livestock Waste Management Facility

Date application received: 02/23/2024

Property ID: 06-34-300-001

Reviewer: SC

Log number: TC-151202

Applicant: Toby Fehr

2842 County Rd 1600 N.

El Paso, IL 61738

Legal Description:

NW 34 ¼ Section Twp: 28N Range 2E PM: 3

Facility: Fehr Brothers-Minonk

1768 County Rd. 2900 E.

Minonk, IL 61760

County: Woodford

Facility Contact: Toby Fehr

2842 County Rd 1600 N.

El Paso, IL 61738

Date Control Devices installed: 07/2008

Application Signature by: Tobias Fehr

Phone: 309-208-0203

fehrbrothers@gmail.com

Title: Owner

Contents of Application: Application form, construction plans, narrative, pollution control diagram

Is there a pollutant control flow diagram? **Yes**

Is there sufficient diagrams showing the pollution control facilities? **Yes**

This facility generates the following pollutants and prevents their discharge as indicated:

Livestock waste is collected and land applied to cropland.

Physical description of pollution control facilities that ARE recommended:

The livestock waste handling facilities consist of one (1) concrete manure deep pit (approximately 257 ft. x 121.83 ft. x 10 ft.) and the concrete slatted flooring over the manure pit. The concrete manure pit has twelve (12) pumpout pits (approximately 6 ft. x 6 ft. x 10.83 ft.). The pit is surrounded by a 920 lft. x 6 in. PVC perimeter drain tile called Form-a-Drain to prevent flotation of the pit.

Pollution control facilities requested by the Applicant through Description of Pollution Control Facilities, Section 2 of the application form and the attachments:

One (1) concrete manure pit,

Concrete slatted floor,

Twelve (12) pumpout pits,

and one (1) perimeter drain.

A process flow diagram with narrative is provided by the attachment of the application.

Illinois EPA Log #: TC-151202

Page 2 of 2

Recommended Action: Issue tax certification.

In addition to the above described facilities, the Agency determined that the following facilities ARE NOT pollution control facilities according to § 125.200 having the primary purpose of eliminating, preventing, or reducing air or water pollution or treating, pretreating, modifying or disposing of any potential solid, liquid or gaseous pollutant which if released without pretreatment, treatment, modification or disposal might be harmful, detrimental or offensive to human, plant or animal life, or to property and therefore ARE NOT recommended.

Not applicable.

Notes:

Nothing follows – SC - (March 19, 2025)

Coulton, Sarah N.

From: Kari Fraley <kfraley@fwieng.com>
Sent: Wednesday, March 19, 2025 9:45 AM
To: Coulton, Sarah N.
Subject: [External] RE: Fehr Bros. Tax Certification Add'l Info Needed
Attachments: Pollution Control Facility Description.pdf

Sarah,

The perimeter drain is approximately 920' of 6" form-a-drain. I included the length in the description attached.

Thanks

Kari Fraley
Agricultural Engineer
Frank & West Environmental Engineers, Inc
1032 S. 2nd Street
Springfield, IL 62704
Office Phone: 217-679-7361
Cell Phone: 618-535-4435
kfraley@fwieng.com

From: Coulton, Sarah N. [mailto:Sarah.Coulton@Illinois.gov]
Sent: Wednesday, March 19, 2025 9:04 AM
To: kfraley@fwieng.com
Subject: Fehr Bros. Tax Certification Add'l Info Needed

Good morning, Kari,

I am reviewing the Fehr Brothers-Minonk Tax Certification that was received by our office on 2/23/24. Please provide the length of the perimeter drain and its material.

Sincerely,
Sarah

Sarah Coulton
Environmental Protection Specialist
Industrial, 401/Mines Sub-Unit, Permit Section, Division of Water Pollution Control
Illinois Environmental Protection Agency, Bureau of Water
2520 West Iles
Springfield, IL 62794-9276
Sarah.Coulton@illinois.gov
Telephone: (217) 785-7428

State of Illinois - CONFIDENTIALITY NOTICE: The information contained in this communication is confidential, may be attorney-client privileged or attorney work product, may constitute inside information or internal deliberative staff communication, and is intended only for the use of the addressee. Unauthorized use, disclosure or copying of this communication or any part thereof is strictly prohibited and may be unlawful. If you have received this communication in



Illinois Environmental Protection Agency

1021 North Grand Avenue East • P.O. Box 19276 • Springfield • Illinois • 62794-9276 • (217) 782-3397

Division of Water Pollution Control

Tax Certification Form for Livestock Operations

This form's purpose is for the application for tax certification of water pollution control facilities at a livestock operation in accordance with 35 Ill. Admin. Code Part 125. For purposes of this form, a water pollution control facility ("facility") is designed, constructed, installed or operated for the primary purpose of eliminating, preventing, or reducing water pollution. Multiple facilities may be submitted using this form; however, all facilities must be located on the same livestock operation site. Separate applications must be completed for separate livestock operations.

All other types of operations (e.g. industrial, agricultural, etc.) and air pollution control facilities must use form IL 532-0222

Please follow the instructions found throughout this form. If you need additional assistance with filling out this form, please call the Bureau of Water at 217-782-3362. Additional information about the tax certification process and applicable regulations including definitions may be found at the Agency website: www2.illinois.gov/epa/topics/forms/water-permits/tax-certification

I. Applicant Information

Company: Fehr Brothers - Minonk

Person Authorized to Receive Certification

Name: Toby Fehr

Street Addr: 2842 County Rd 1600 N

City: El Paso State: IL ZIP: 61738

Phone: 309-208-0203 ext: _____

Email: fehrbrothers@gmail.com

Person to Contact for Additional Details

Name: same

Street Addr: _____

City: _____ State: _____ ZIP: _____

Phone: _____ ext: _____

Email: _____

II. Livestock Operation Information

Site Location

The location of the parcel of land where the facilities are located and given by quarter section, township, range and county must be provided. The Public Land Survey System information is available on county plat maps or at www.isgs.illinois.edu/plss

Quarter Section: NW Township: 28N Range: 2E Prime Meridian: 3 County: Woodford

Municipality Name: 34 Township Name: Minonk

Street Address: 1768 County Rd 2900 E City: Minonk State: IL ZIP: 61760

Property Index Number(s): 016-34-300-001

Add PIN

Del. PIN

A property index number (PIN) for the parcel of land where pollution control facilities are located is required. If multiple PINs are applicable to the requested facilities, you must identify all applicable PINs in the above line and in Section III below. If you do not know your PIN you may obtain it from your records or your County's tax assessors website which may be found on the Illinois Department of Revenue website at www2.illinois.gov/rev/Individuals/Pages/IllinoisCounties.aspx

Livestock Activities: Provide descriptions of the livestock operations including type of animals at the site. (Text box will expand.)

The structure is a swine deep pit barn where animals are housed on slats with a below ground concrete waste storage pit.

Pollutant Sources: Identify potential sources of water pollution that are being controlled (i.e., beef feedlot runoff, swine manure, silage leachate, etc.). Provide estimated quantities of each pollutant that is produced in gallons per year. (Text box will expand.)

Swine Manure is the potential source of water pollution that is being controlled.
Approximately 2,057,725 gal of manure is produced annually.

Are the pollutants collected by the facility land applied?

☒ Yes ☐ No

If No, provide a description of the final disposition of the pollutants which are collected by the facility.

III. Pollution Control Facility Information

Applicant must ensure each requested pollution control facility is represented accurately in both Part A and Part B of this Section.

Part A. Operational Diagram

Using the space provided below or on a separate sheet of paper, provide a plan sketch or map of the livestock operation scaled to show the location and layout of all the requested facilities. All requested facilities must be clearly identified on this diagram. Each facility should be labeled with the pollution control facility number identified in Part B of this Section and primary dimensions to help distinguish between other requested facilities. Please include labels of roadways, downstream waterways, other important landmarks and a north seeking arrow.

☒ Check this box if the required diagram was completed on a separate sheet and attached to this application.

Part B. Pollution Control Facility Data

For each separate requested pollution control facility in this application, provide written or typed responses to all of the following questions. Use the button below the questions to add blank questions for each additional requested facility.

Pollution Control Facility Number 1

Name of pollution control facility: Fehr Brothers - Minonk

Provide a physical description including all pertinent dimensions (length, width, depth, diameter), construction materials (e.g. steel, HDPE, concrete block, etc.), and rating (e.g. 10 HP centrifugal pump). (Text box will expand.)

See Attached

Is the requested facility used 100 percent for elimination, prevention, or reduction of water pollution?

☒ Yes ☐ No

If No, list all other uses of the facility and provide a use-percentage estimate for each of those other uses.

Original cost of the pollution control facility: 1050000.00

Date of installation or status of installation: July 2018

Property Index Number (PIN): 00-34-300-001

Applicable Illinois EPA permit number(s): _____

Are supplemental diagrams or construction drawings for this pollution control facility attached to the application? ☒ Yes ☐ No

If Yes, please label the diagram with the specific pollution control facility number identified above.

Click "Add a Facility" to add another set of facility questions for each requested facility. A number will automatically be assigned to the additional facility. Please use this number when labeling facilities in the diagram required in Part A of this Section. Handwritten submittals must also include one set of questions per requested pollution control facility. Use the "Delete last Facility" button to remove excess questions.

Add a facility

Delete last facility

IV. Discharge Point Locations and Receiving Waters

Provide a written description of the surface water drainage characteristics of the operation which may convey wastewater or polluted stormwater runoff from the facility to downstream waterways. Identify the location(s) on the property at which runoff or surface discharge leaves the property.

The facility is located at a high point in the field and all surface waters drain away from the facility.

Identify local ditches, streams, rivers, ponds or lakes that may receive wastewater or polluted stormwater runoff from the operation. Also identify any named waterways that are immediately downstream from the local waterway.

The closest stream is straight south of the facility approximately 1800'. This drainage eventually enters Panther Creek to the west of the facility.

V. Approvals of Application and Signature

The information on this form and attachments is submitted in accordance with the Illinois Property Tax Code, as amended, and to the best of my knowledge is true and correct.

Any person who knowingly makes a false, fictitious, or fraudulent material statement, orally or in writing, to the Illinois EPA commits a Class 4 felony. A second or subsequent offense after conviction is a Class 3 felony. (415 ILCS 5/44(h))

Tobias J. Fehr

Printed Name

Partner

Title

Tobias J. Fehr

Signature

2/14/2024

Date

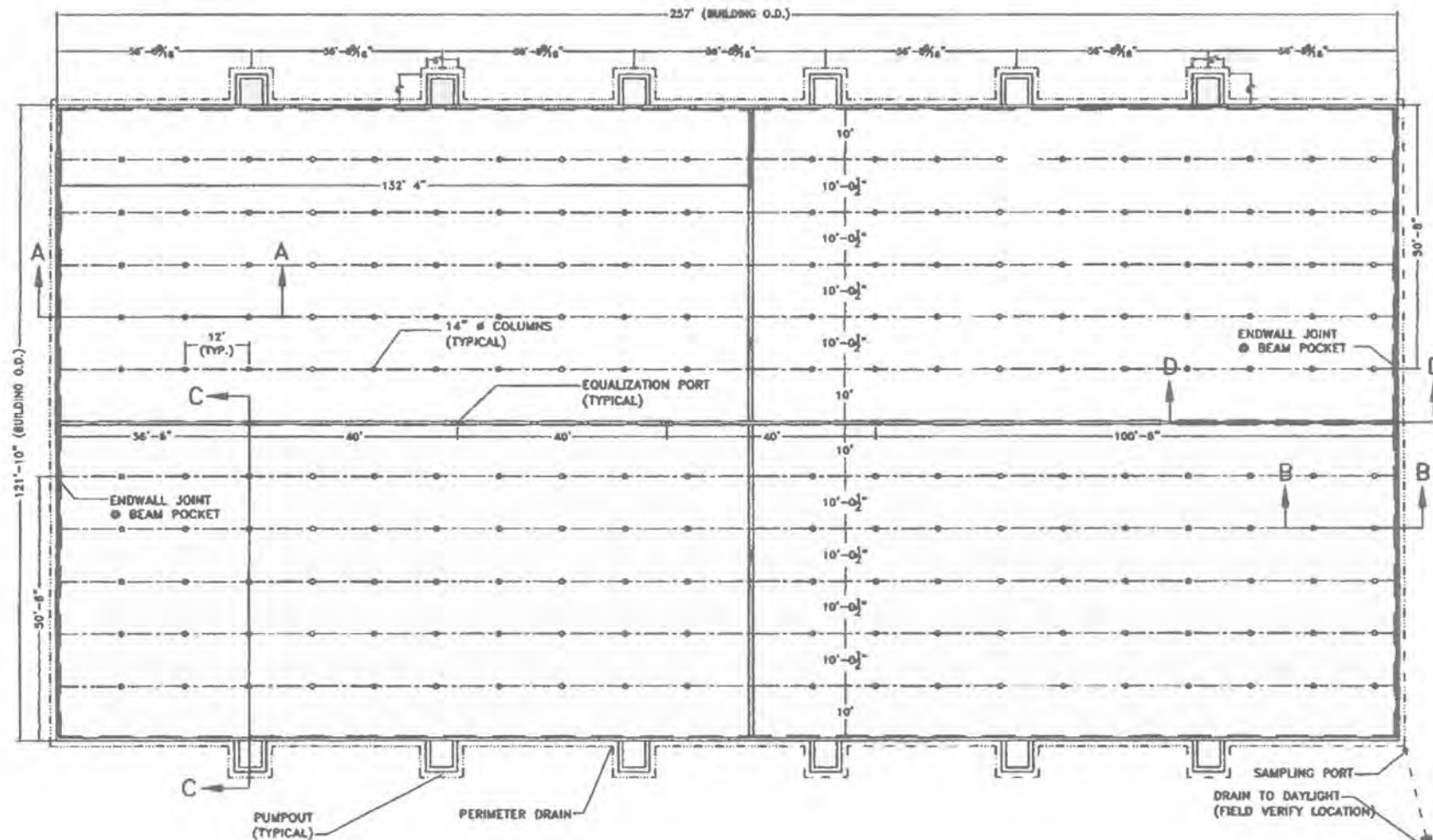
VI. Submittal of Your Application

Completing this Form: The absence of information requested in this form may result in denial of your application for tax certification. If information is omitted, Agency staff will determine when and if such information or data is essential and may contact you to obtain this information to complete its review. This application form may be completed and stored locally in electronic form for future printing. Electronic submittal or email submittal of this form is not authorized. If handwritten, the form must be legibly completed.

Attachments: Please only send attachments on 8.5" x 11" paper, do not send 11" x 17" sheets.

Please mail the completed and signed form and necessary attachments to:

Illinois Environmental Protection Agency
Division of Water Pollution Control, Mail Code #15
Attention: Permit Section
1021 North Grand Avenue East
P.O. Box 19276
Springfield, Illinois 62794-9276



Frank & West
Environmental Engineers, Inc.
1032 S. 2nd Street
Springfield, IL 62704
Phone: 217/679-7361
Fax: 217/679-8362

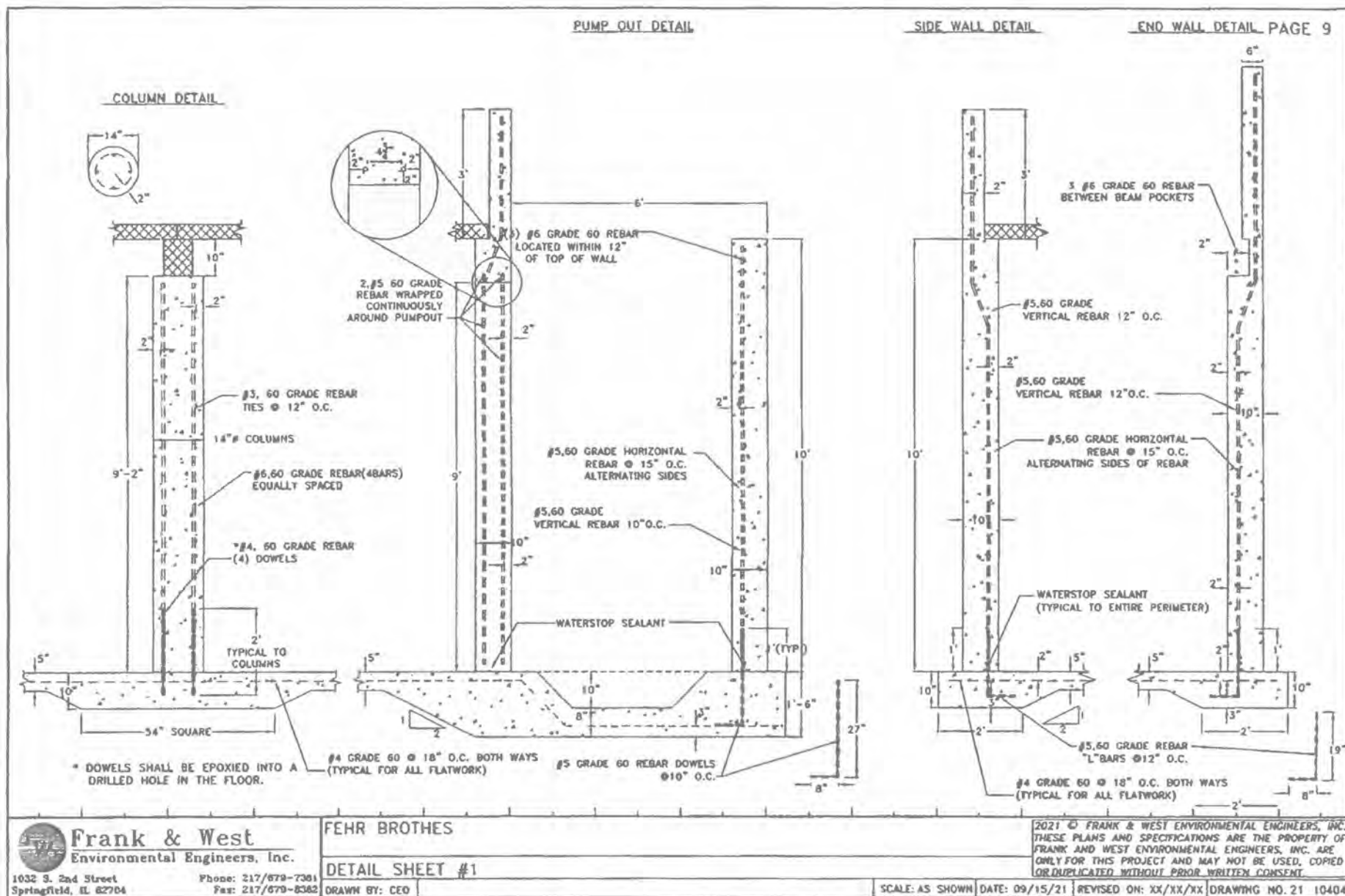
FEHR BROTHERS

PLAN VIEW

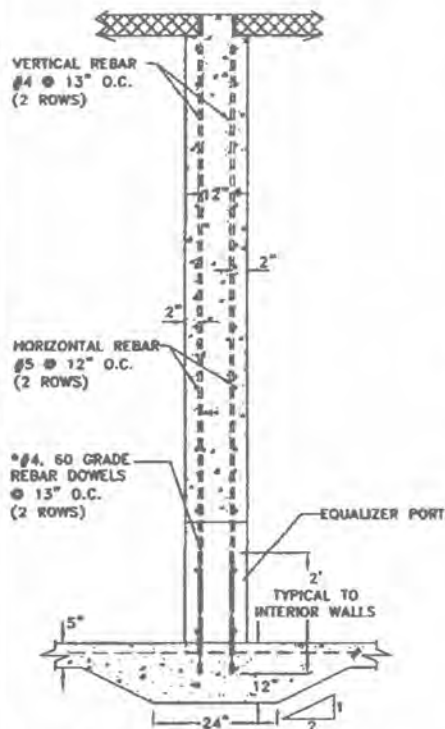
DRAWN BY: CEO

2021 © FRANK & WEST ENVIRONMENTAL ENGINEERS, INC.
THESE PLANS AND SPECIFICATIONS ARE THE PROPERTY OF
FRANK AND WEST ENVIRONMENTAL ENGINEERS, INC. ARE
ONLY FOR THIS PROJECT AND MAY NOT BE USED, COPIED
OR DUPLICATED WITHOUT PRIOR WRITTEN CONSENT.

SCALE: AS SHOWN DATE: 09/15/21 REVISED ON: 09/27/21 DRAWING NO. 21-10401

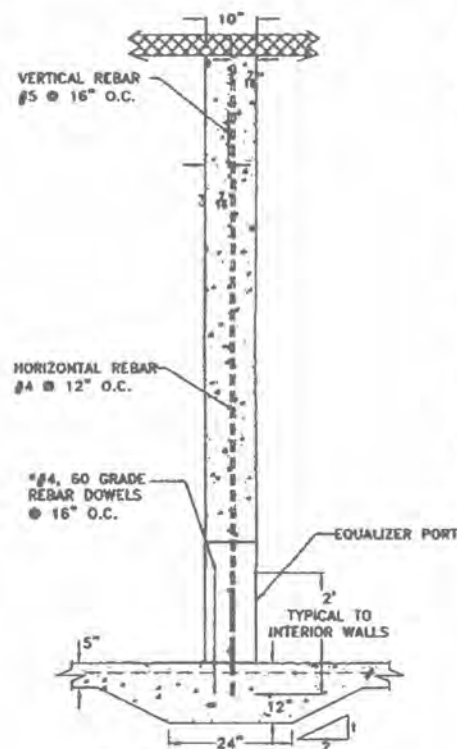


NORTH/SOUTH PARTITION WALL DETAIL



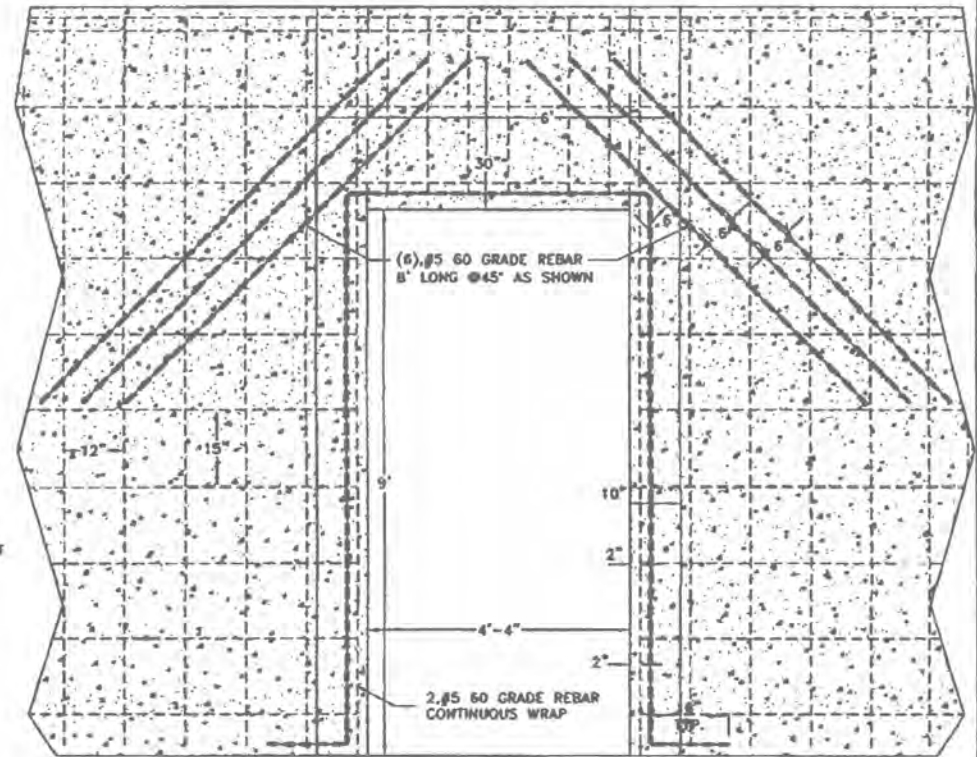
* DOWELS SHALL BE EPOXIED INTO A DRILLED HOLE IN THE FLOOR.

EAST/WEST PARTITION WALL DETAIL



* DOWELS SHALL BE EPOXIED INTO A DRILLED HOLE IN THE FLOOR.

PUMPOUT OPENING DETAIL



Frank & West
Environmental Engineers, Inc.

1032 S. 2nd Street
Springfield, IL 62704

Phone: 217/679-7361
Fax: 217/679-6382

FEHR BROTHERS

DETAIL SHEET #2

DRAWN BY: CEO

2021 © FRANK & WEST ENVIRONMENTAL ENGINEERS, INC. THESE PLANS AND SPECIFICATIONS ARE THE PROPERTY OF FRANK AND WEST ENVIRONMENTAL ENGINEERS, INC. ARE ONLY FOR THIS PROJECT AND MAY NOT BE USED, COPIED OR DUPLICATED WITHOUT PRIOR WRITTEN CONSENT.

SCALE: AS SHOWN DATE: 09/15/21 REVISED ON: 09/27/21 DRAWING NO. 21-10404

Fehr Brothers – Description of Liquid Waste storage Structure

The waste storage structure is a concrete pit with dimensions of 257' x 121'-10" x 10' deep and is used to store animal waste until the appropriate time to apply the manure to agricultural fields at agronomic rates. There are 200 - 14" diameter x 9'-2" tall concrete columns to hold 10" x 8" x 12' concrete beams throughout the pit. Livestock are on concrete slatted floors which allows manure to enter the concrete pit below. The barn consists of 12 - 6' x 6' x 10'-10" pit pump outs. Exterior walls are 10" thick and sit on a 2' x 10" footing. Concrete columns are all 14" diameter and sit on a 54" square x 10" thick footing. There is a 12" x 10' x 255'-4" partition wall that runs north to south on the pit. There is a 12" x 10' x 120'-2" partition wall that runs east to west on the pit. Partition walls sit on a 24" wide x 12" thick footing. The floor is 5" thick concrete.

The entire pit is surrounded by approximately 920' of 6" form-a-drain.

Please see the attached plan view for building layout.

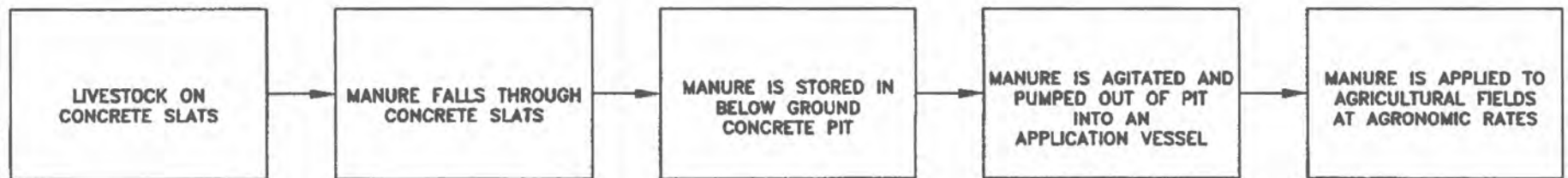
Fehr Brothers – Description of Liquid Waste storage Structure

The waste storage structure is a concrete pit with dimensions of 257' x 121'-10" x 10' deep and is used to store animal waste until the appropriate time to apply the manure to agricultural fields at agronomic rates. There are 200 - 14" diameter x 9'-2" tall concrete columns to hold 10" x 8" x 12' concrete beams throughout the pit. Livestock are on concrete slatted floors which allows manure to enter the concrete pit below. The barn consists of 12 - 6' x 6' x 10'-10" pit pump outs. Exterior walls are 10" thick and sit on a 2' x 10" footing. Concrete columns are all 14" diameter and sit on a 54" square x 10" thick footing. There is a 12" x 10' x 255'-4" partition wall that runs north to south on the pit. There is a 12" x 10' x 120'-2" partition wall that runs east to west on the pit. Partition walls sit on a 24" wide x 12" thick footing. The floor is 5" thick concrete.

The entire pit is surrounded by a 6" form-a-drain.

Please see the attached plan view for building layout.


POLLUTION CONTROL FACILITY
PROCESS FLOW DIAGRAM



Fehr Bros - Minonk

Surface Flow Direction

Legend

-  Ken Fehr - Minonk
-  Route

Ken Fehr - Minonk

deep pt
barn

County Rd 2900 E

County Rd 2900 E

Google Earth

400 ft



ATTACHMENT A

IEPA Cover Letter & Fehr Brothers Highlighted Tax Certification Form with attachments



FRANK & WEST

ENVIRONMENTAL ENGINEERS, INC.

November 22, 2023

Illinois Environmental Protection Agency
Division of Water Pollution Control, Mail Code #15
Attention: Permit Section
1021 North Grand Avenue East
P.O. Box 19276
Springfield, Illinois 62794-9276

RECEIVED
FEB 23 2024
IEPA
BOWWPC/PERMIT SECTION

RE: Fehr Brothers

To Whom it May Concern:

Frank & West is submitting an application for certification of property tax treatment for pollution control facility on behalf of the Fehr Brothers facility.

If you have any further questions or comments regarding the Fehr Brothers facility non-lagoon livestock waste handling facility, please advise.

FRANK & WEST
ENVIRONMENTAL ENGINEERS, INC.

Kari Fraley, E.I.
Agricultural Engineer

Attachment: Application for Certification

STATE OF ILLINOIS

COUNTY OF SANGAMON

)
)
)
)
)

CERTIFICATE OF SERVICE

I, the undersigned attorney at law, hereby certify that I have served on the date of July 10, 2025, the attached **NOTICE**, **APPEARANCE** and **RECOMMENDATION OF THE ILLINOIS ENVIRONMENTAL PROTECTION AGENCY**, upon the following persons by causing to be mailed a true copy thereof in an envelope duly addressed, bearing proper first class postage, and deposited in the United States mail at Springfield, Illinois:

Fehr Brothers
Toby Fehr
2842 County Road 1600 N.
El Paso, Illinois 61738

Copies also provided electronically as follows:

Illinois Department of Revenue
via email at REV.PropTaxApp@illinois.gov
101 West Jefferson
P.O. Box 19033
Springfield, Illinois 62794

[Electronic Filing]

Clerk
Illinois Pollution Control Board
60 E. Van Buren St., Ste. 630
Chicago, Illinois 60605

ILLINOIS ENVIRONMENTAL PROTECTION AGENCY

/s/ Amanda Kimmel
Assistant Counsel
Division of Legal Counsel
2520 W Iles Ave.
P.O. Box 19276
Springfield, Illinois 62794-9276
217.782.5544
217.782.9143 (TDD)